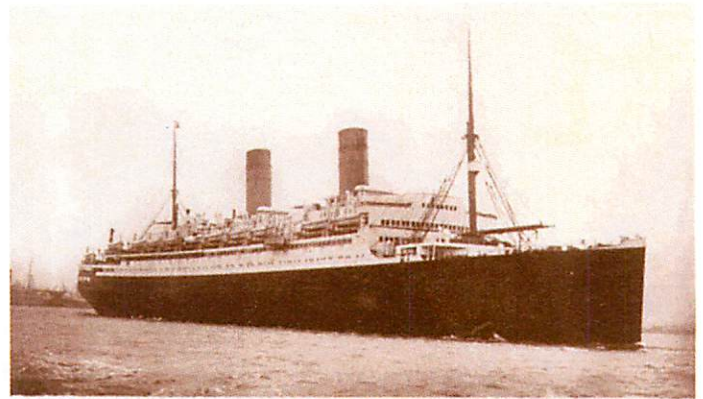
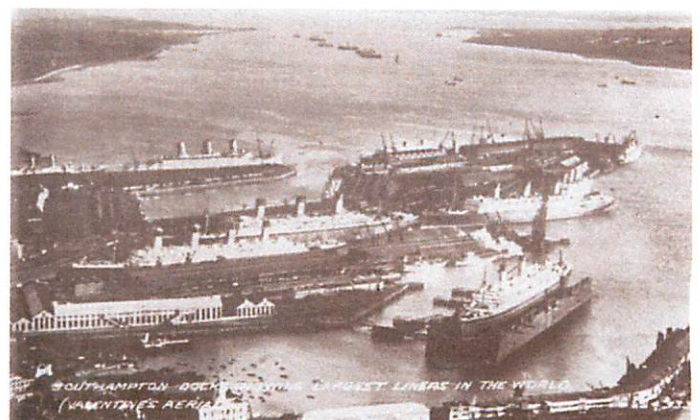


All aboard the Homeric

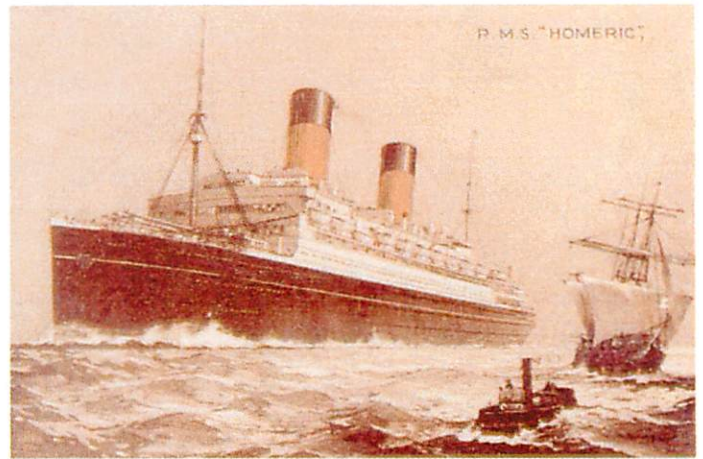
- On 17th December 1913 Norddeustcher Lloyd's launched the *Columbus* in Danzig (now Gdansk).
- Construction of ship put on hold in August 1914 due to outbreak of World War I.
- On 28th June 1919 the Treaty of Versailles surrenders *Columbus* to Britain.
- In June of 1920 the *Columbus* is purchased by White Star Line from government forming a three ship service comprising of the *Olympic* (replaced *Titanic*) and the *Majestic*. The ship was completed by Harland and Wolff in Danzig before being renamed the *Homeric* replacing the *Britannic*; sister ship of *Titanic* sunk in the Mediterranean.
- On 21st January 1922 the *Homeric* arrives at Southampton where after minor alterations she makes her maiden voyage to New York on 21st February 1922.
- Although slow in comparison to its sister ships the roll-less virtues of her construction and luxurious fittings prove popular with passengers and crew. The *Homeric* was constructed with mass immigration in mind with large steerage areas.
- In 1923 her original coal powered system is overhauled and refitted with an oil fuelled propulsion system.
- In the 1920's the United States began restricting immigration while the White Star Line suffered from the Great Depression of the early 1930's. In 1928 the *Oceanic* was announced as the *Homeric's* replacement.



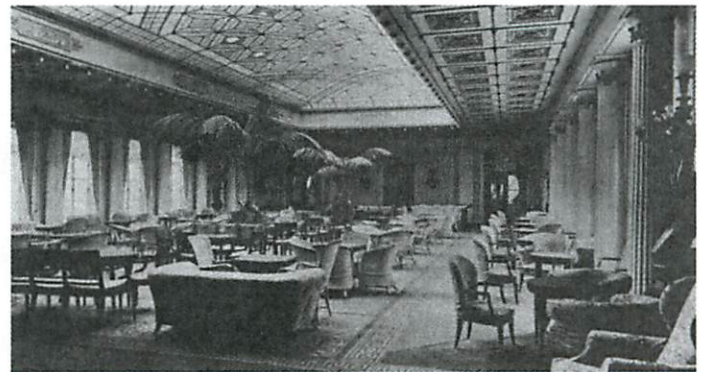
1039 C. R. Hoffmann, Southampton. RMS "HOMERIC" 34,356 Tons Length 775 Ft. Breadth 83 Ft.



- On June 1st 1932 the *Homeric* made her final Atlantic crossing before becoming a full-time cruise ship. From Southampton and Liverpool the *Homeric* sailed to destinations in the Canary Isles, West Africa and the Mediterranean.

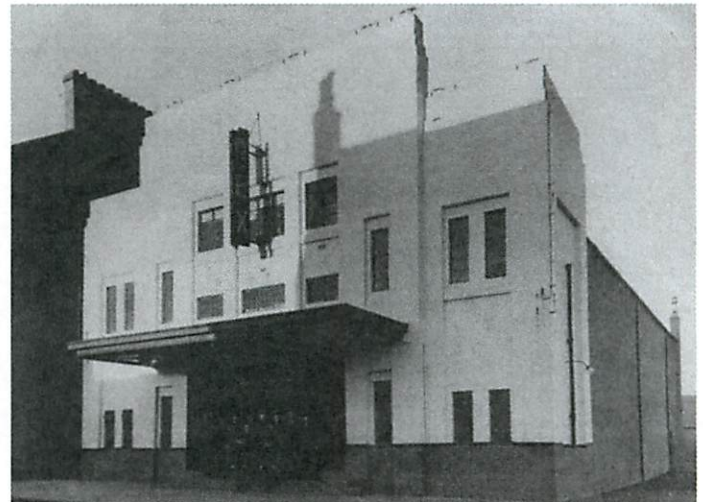


- In February 1934 the White Star Line merged with Cunard and the *Homeric* was placed on the surplus list. One of her last missions was to attend King George V's Jubilee fleet review in July 1935. In September 1935 she was laid up off the Isle of Wight.



- Attempts to bring her back to Germany fell through. In 1935 she was withdrawn from service and laid up off Ryde, Isle of Wight. Sold for scrap in February 1936 for £74,000 she was broken up by Thomas W. Ward at Inverkeithing.

- Travelling showman, John Edward Sheeran bought the *Homeric's* chandelier at a flea market in Kirkcaldy. He then purchased the ship's 1st class dining room at the scrap yard in Inverkeithing where her interior furnishings were dismantled and transported by 14 wagons to Stonehouse Railway Station.



- On 22nd January 1937 the 'Rex' was opened in Argyle Street by Sir Harry Lauder and was hailed as 'Lanarkshire's King of Picture Houses'. The picture house was furnished with a chandelier, pillars, mahogany panel fittings and staircase.

- John Sheeran was a showman by trade, originally dealing in slot machines before it was outlawed. He invested his savings in the Rex picture house, which cost £1400 to refurbish. The evolution of television, put an end to this era and the picture house was redeveloped, returning to dealing in slot machines and amusements when the trade was legalised once more.

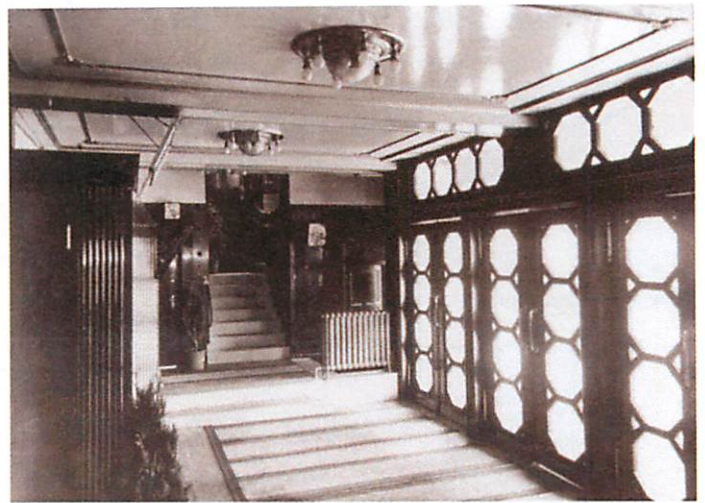


- The picture house proved very popular especially during the war years. The first picture shown was 'It happened one night' starring Clark Gable and Claudette Colbert. At this time the seating prices were 6^D for the front stalls, 9^D for the back, 1/3^D for the front balcony and 1/- for the rear balcony.
- During the war years the Rex was also used for war fund cabaret performances. Sir Harry Lauder was the chairman of this committee and was a 'regular' in entertaining audiences and wounded soldiers. Mr Sheeran was a founder member of the committee, raising over £1700 for local soldiers. He died in June 1967 at the age of 73. Many celebrities graced the Rex including Will Fyffe CBE on Sunday 21st February 1943. The Rex was the only stage on which Harry Lauder and Will Fyffe appeared together on the same bill.
- Recently a cruise ship called the '*Homeric*' was built, and now sails from Dover round the Arctic to Scandinavia. The Rex today is used as a store for the family business, but inside it still retains many of the features and character that made it one of the most attractive picture houses in the country.



**Hamilton Advertiser; January 23rd 1937
NEW CINEMA'S FIRST NIGHT**

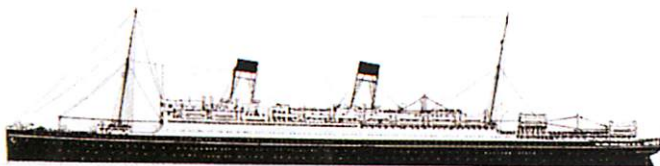
"Full homage was done to what can be genuinely termed Lanarkshire's King of picture houses, appropriately named 'The Rex', when it was opened on Thursday night, and a crowded house appreciated and admired this splendidly fitted up structure. Seated to accommodate 750 persons, what was once the concert hall of the "Homer", has been transformed into one of the finest cinemas for its size in and no doubt out of the county, and Mr Sheeran may indeed feel proud of the achievement. Film fans will find nothing left to be desired regarding sound equipment and the F.I. (Film Industry) outfit has to be heard to be appreciated. No doubt many will avail themselves at an early opportunity to go, to hear and see what has been a long felt want in the village, and which now having become such a splendid reality deserves every encouragement."



REX CINEMA
ARGYLE STREET, STONEHOUSE
Continuous from 6.15. Free Car Park.
To-day (Sat.) Ronald Colman, Basil Rathbone, Frances Dee, and Ellen Drew in "IF I WERE KING" (I).
Week commencing Monday, 14th August
Mon. & Tues. Arthur Lucan & Kitty McShane in "OLD MOTHER RILEY IN PARIS" (I).
Wed. & Thur. Jowl Howard & Mary Carlisle in "GENERALS OF TO-MORROW" (A), also William Boyd & Russell Hayden in "SAM-BO JUSTICE" (U).
Fri. & Sat. Eileen Durbia, Jackie Cooper, & Melvyn Douglas in "THAT CERTAIN AGE" (U).

Homeric Specifications:

- Builder:** Schichau, Danzig
- Launch Date:** 17th December 1913
- Length:** 236.4m
- Beam:** 25m
- Deep draught:** 11m
- Funnels:** 2
- Masts:** 2
- Construction:** Steel
- Tonnage:** 34351 gross tons
- Engines:** Steam triple expansion engines powering two propellers (32000 horsepower)
- Service Speed:** 18 knots (19.5 knots after 1923 refit)
- Passengers:** 2766 passengers (529 1st class; 487 2nd class; 1750 3rd class) initially; (523 1st class; 841 2nd class; 314 3rd class) in 1930 3rd class
- Crew:** 730 initially; (625 in 1930)



Monday, 22nd April.—For 1 Day Only
Joe Kirkwood, Jr. Elyse Knox
Gentleman Joe Palooka
also **The Cobra Strikes**

Tuesday & Wednesday For 2 Days
Gloria Jean, Jimmy Lydon. In
An Old Fashioned Girl
also **Border Bandits**

Thursday & Friday For 2 Days
George Montgomery, Ellen Drew
Indian Scout
also **Stork Bites Man**

Saturday For 1 Day Only
William Bendix, Claire Trevor in
The Babe Ruth Story

Coming Attractions
Outpost In Morocco
Sword of the Avenger
ELLEN
The Manager of this Cinema would be grateful if Patrons would kindly use the ash trays provided.
THANK YOU.

The REX CINEMA STONEHOUSE
Monthly Programme
TIMES OF SHOWING:
Monday—Doors open 6 p.m. Continuous Commencing 6.15 & 8.30
Tues. to Fri.—Doors open 7 p.m. Commencing 7.15
Saturday—Two Distinct Houses at 6.15 & 8.30 p.m. Doors open 6 p.m. Childrens Matinee on Saturday at 2 p.m.
PRICES OF ADMISSION
1/6 1/- and 9d.
No Half-Price on Saturday

Monday, 2nd April.—For 1 Day Only
Jimmie Davis, Margaret Lindsay
Louisiana

Tuesday & Wednesday Two Days
William Bendix, Grace Bradley
in
Two Knights in Brooklyn
also **Jigsaw**

Thursday & Friday Two Days
William Bendix, Dennis O'Keefe
in
Cover Up
Also **Silent Conflict**

Saturday One Day Only
Bonita Granville, Don Castle
in
The Guilty
Also **The Land of the Lawless**

Monday, 9th April.—For 1 Day Only
John Ireland, Sheila Ryan
in
Railroded
also **Prairie Express**

Tuesday & Wednesday Two Days
Maria Montez, Jean Pierre
Siren of Atlantis
also **Susie Steps Out**

Thursday & Friday Two Days
Mickey Rooney, Thomas Mitchell
in
The Big Wheel
Also **The Daring Caballero**

Saturday One Day Only
Richard Basehart, Audrey Totter
in
TENSION

Monday, 16th April.—For 1 Day Only
Stuart Erwin, Glenda Farrell in
Heading for Heaven
also **Valley of Fear**

Tuesday & Wednesday Two Days
Paul Henreid, Joan Bennett in
THE SCAR
also **Campres Sleuth**

Thursday & Friday Two Days
Eddie Albert, Gale Storm in
The Dude Goes West
also **The Big Fix**

Saturday One Day Only
Michael O'Shea, Nancy Coleman
in
VIOLENCE